

HEADWATER INVESTMENT CONSULTING, INC.

Review & Outlook

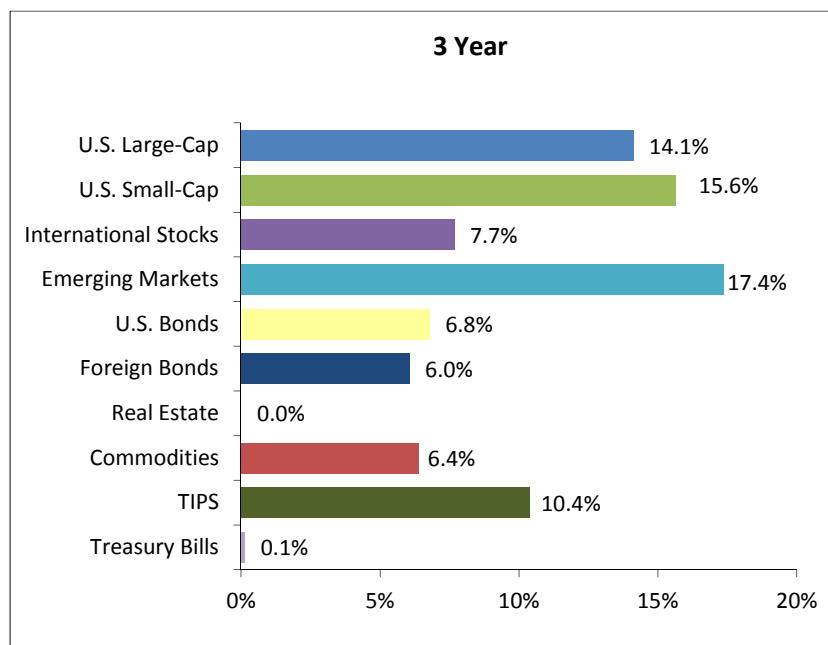
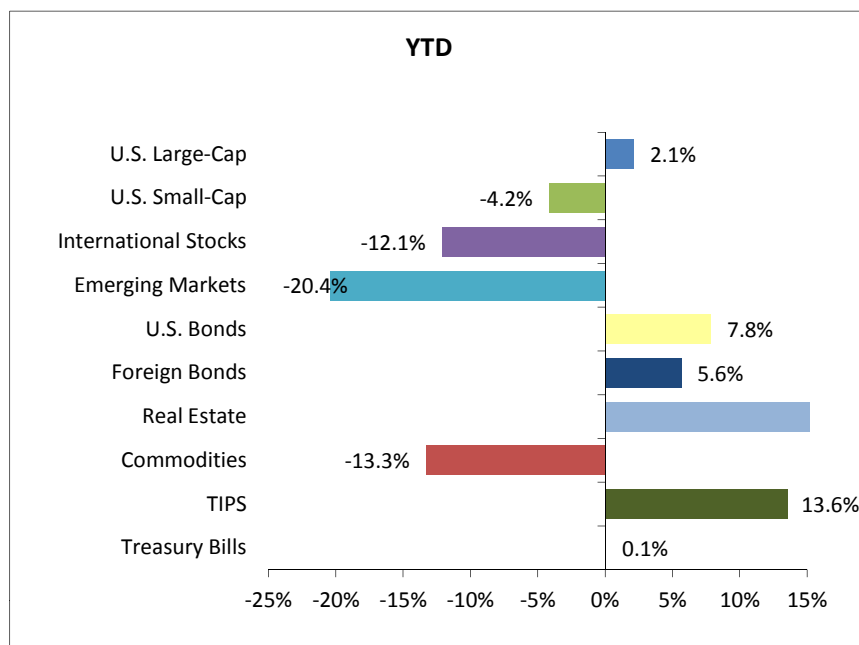
December 31st, 2011

2290 SW 2nd Street, Suite A
McMinnville, OR 97128

info@headwater-ic.com
www.headwater-ic.com

TEL: 503-565-2100
FAX: 503-565-2101

ASSET CLASS PERFORMANCE



Index Performance as of: 12/31/2011

	<u>1 Mo</u>	<u>3 Mo</u>	<u>YTD</u>	<u>1-yr</u>	<u>3-yr</u>	<u>5-yr</u>	<u>10-yr</u>
U.S. Large-Cap	1.0%	11.8%	2.1%	2.1%	14.1%	-0.3%	2.9%
U.S. Small-Cap	0.7%	15.5%	-4.2%	-4.2%	15.6%	0.2%	5.6%
International Stocks	-1.0%	3.3%	-12.1%	-12.1%	7.7%	-4.7%	4.7%
Emerging Markets	-1.3%	4.1%	-20.4%	-20.4%	17.4%	0.1%	11.2%
U.S. Bonds	1.1%	1.1%	7.8%	7.8%	6.8%	6.5%	5.8%
Foreign Bonds	0.7%	0.2%	5.6%	5.6%	6.0%	6.5%	7.2%
Real Estate	5.9%	15.0%	16.5%	16.5%	0.0%	0.0%	0.0%
Commodities	-3.8%	0.4%	-13.3%	-13.3%	6.4%	-2.1%	6.6%
TIPS	0.0%	2.7%	13.6%	13.6%	10.4%	8.0%	7.6%
Treasury Bills	0.0%	0.0%	0.1%	0.1%	0.1%	1.3%	1.9%

CAPITAL MARKET HISTORY: 15 YEARS OF RETURNS BY ASSET CLASS

Year	Inflation	Money Market	Large Co. Stocks	Small Co. Stocks	Int'l Stocks	Emerging Markets	US Bond Market	Foreign Bonds	TIPS	REIT	Home Prices ¹	Commodities
12/31/2011	3.0	0.1	2.1	-4.2	-12.1	-20.4	7.8	5.6	13.6	16.5	-2.7	-13.3
2010	0.9	0.1	15.1	26.9	7.8	16.4	6.5	4.9	6.3	28.0	-2.4	16.8
2009	2.8	0.2	26.5	27.2	31.8	74.5	5.9	6.9	11.4	27.5	-3.1	18.9
2008	-0.1	1.5	-37.0	-33.8	-43.4	-54.5	5.2	5.4	-2.4	-37.8	-18.6	-35.7
2007	4.2	4.8	5.5	-1.6	11.2	36.5	7.0	10.1	11.6	-17.8	-9.0	16.2
2006	2.5	5.1	15.8	18.4	26.3	29.2	4.3	6.5	0.4	36.0	0.7	2.1
2005	3.4	3.3	4.9	4.6	13.5	30.3	2.4	-5.8	2.8	13.8	15.5	21.4
2004	3.3	1.4	10.9	18.3	20.3	22.5	4.3	9.8	8.5	33.2	16.2	9.2
2003	2.0	1.1	28.7	47.3	38.6	51.6	4.1	14.4	8.4	36.2	11.4	24.0
2002	2.5	1.7	-22.1	-20.5	-15.9	-8.0	10.3	18.1	16.6	3.6	12.2	26.0
2001	1.6	3.7	-11.9	2.5	-21.4	-4.7	8.4	0.2	7.9	12.4	7.9	-19.5
2000	3.4	6.3	-9.1	-3.0	-14.2	-31.8	11.6	-2.6	13.2	31.0	14.1	31.8
1999	2.7	4.9	21.0	21.3	27.0	63.7	-2.1	-5.1	2.4	-2.6	10.8	24.4
1998	1.6	5.0	28.6	-2.6	19.9	-27.7	8.7	17.8	4.0	-17.0	9.1	-27.0
1997	1.7	5.3	33.4	22.4	1.8	-14.0	9.7	-4.3	---	19.7	5.4	-3.4
1996	3.4	5.3	23.0	16.5	6.1	-3.9	3.6	4.1	---	37.0	1.9	23.2
1995	2.5	5.8	37.6	28.5	11.2	-6.9	18.5	19.6	---	12.2	-0.4	15.2
10 Yr Avg	2.4	2.1	3.5	7.7	5.1	15.8	6.0	6.9	7.7	13.8	2.6	6.0
Risk	1.2	1.8	20.1	23.1	25.3	35.8	2.3	6.4	5.7	23.5	11.1	20.3

These are Annual Returns

¹ Home Prices through November 2011

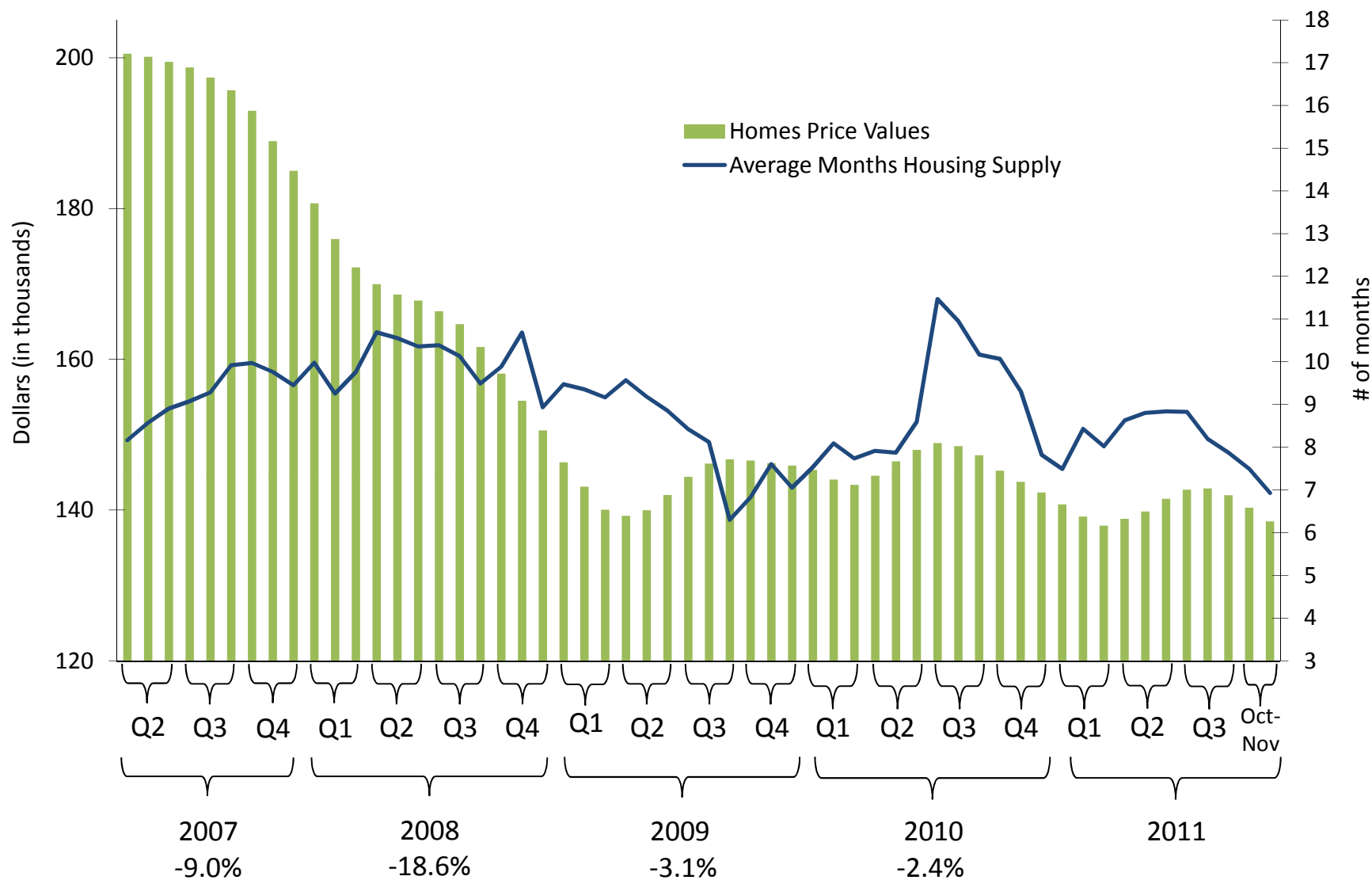
DIVERSIFICATION: THE RANDOMNESS OF RETURNS

Annual Return (%)

	1998	1999	2000	2001	2002	2003	2004	2005	2006	2007	2008	2009	2010	2011
Highest Return	28.6	63.7	31.8	12.4	25.9	51.6	33.2	30.3	36.0	36.5	5.4	74.5	28.0	16.5
	19.9	27.0	31.0	8.4	18.1	47.3	22.5	21.4	29.2	16.2	5.2	31.8	26.9	13.6
	17.8	24.4	13.2	7.9	16.6	38.6	20.3	13.8	26.3	11.6	1.5	27.5	16.8	7.8
	8.7	21.3	11.6	3.7	10.3	36.2	18.3	13.5	18.4	11.2	-2.4	27.2	16.4	5.6
	5.0	21.0	6.3	2.5	3.6	28.7	10.9	4.9	15.8	10.1	-33.8	26.5	15.1	2.1
	4.0	4.9	-2.6	0.2	1.7	23.9	9.8	4.6	6.5	7.0	-35.7	18.9	7.8	0.1
	-2.6	2.4	-3.0	-4.7	-8.0	14.4	9.2	3.3	5.1	5.5	-37.0	11.4	6.5	-4.2
	-17.0	-2.1	-9.1	-11.9	-15.9	8.4	8.5	2.8	4.3	4.8	-37.8	6.9	6.3	-12.1
	-27.0	-2.6	-14.2	-19.5	-20.5	4.1	4.3	2.4	2.1	-1.6	-43.4	5.9	4.9	-13.3
Lowest Return	-27.7	-5.1	-31.8	-21.4	-22.1	1.1	1.4	-5.8	0.4	-17.8	-54.5	0.2	0.1	-20.4

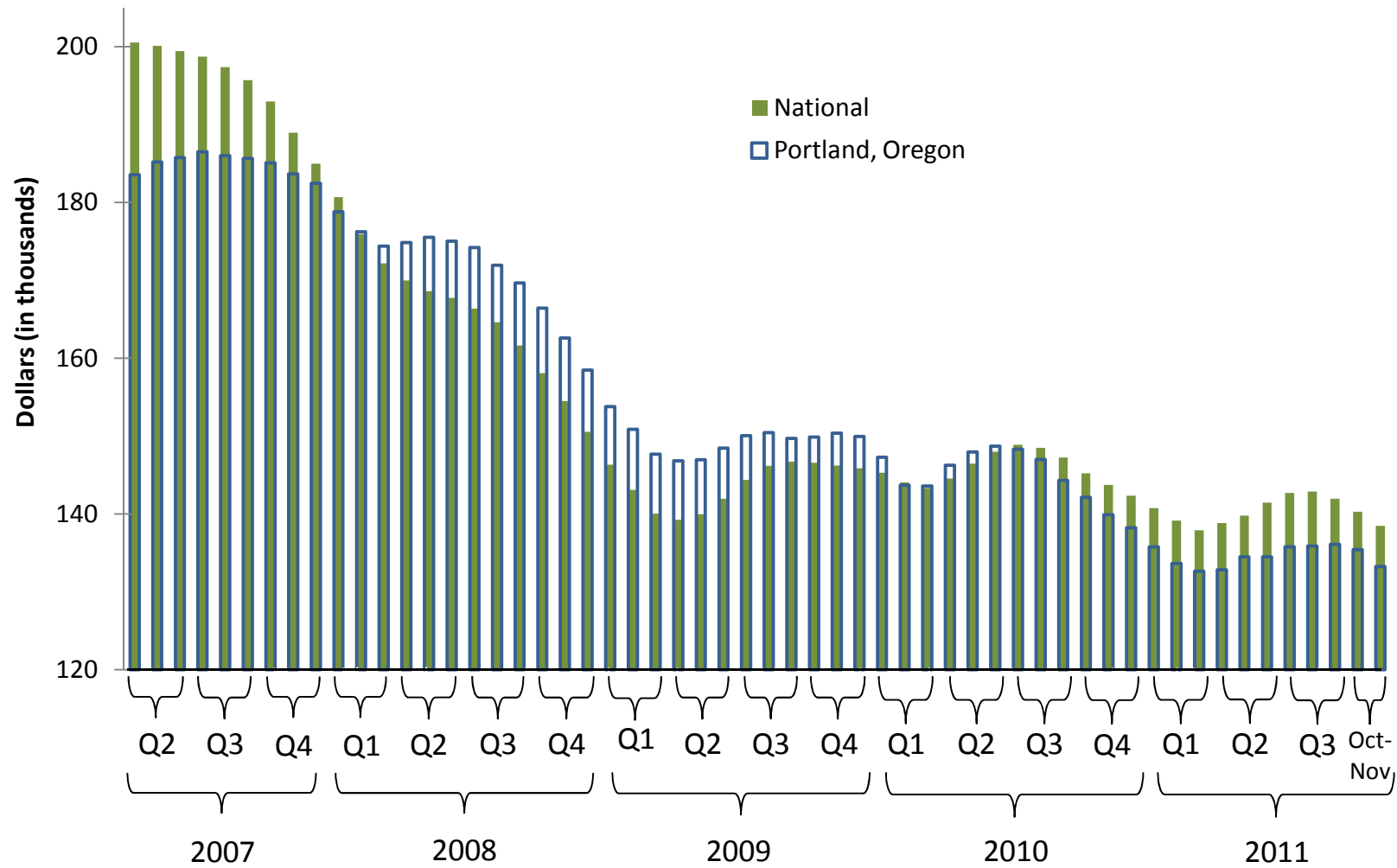


HOME PRICE VALUES COMPARED TO HOUSING INVENTORY



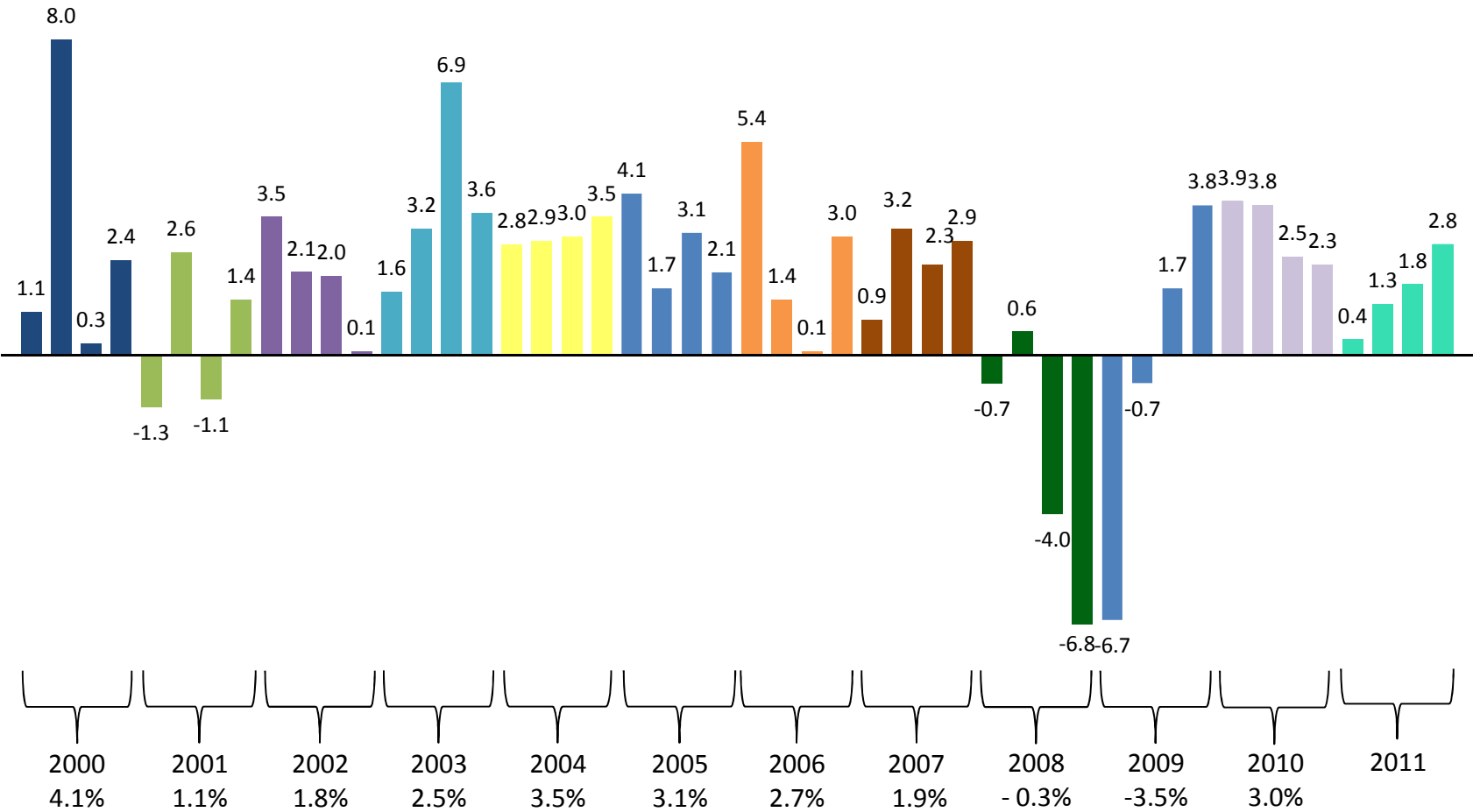
SOURCE: S&P/Case-Shiller Home Price Indices; reported through November 2011; released January 2012

HOME PRICE VALUES: NATIONAL COMPARED TO PORTLAND



SOURCE: S&P/Case-Shiller Home Price Indices; reported through November 2011; released January 2012

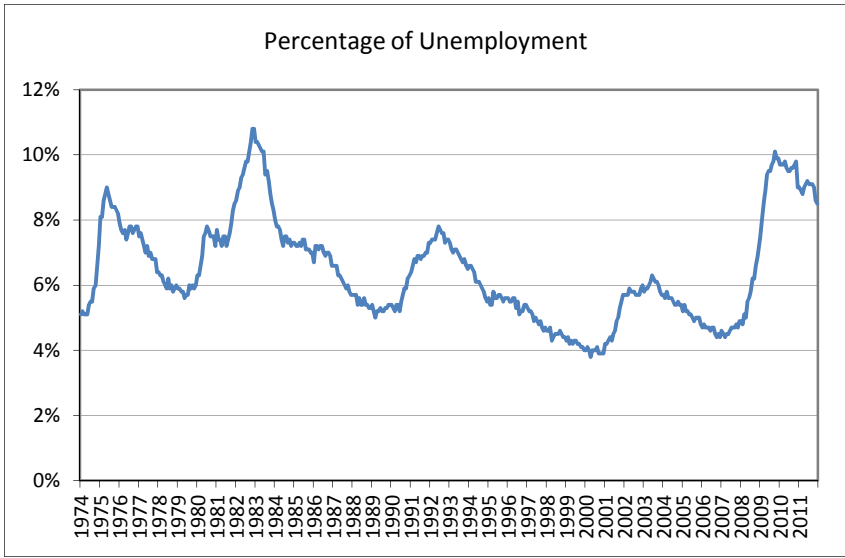
GROSS DOMESTIC PRODUCT: QUARTERLY AND ANNUAL PERCENTAGE CHANGES (2000 - 2011)



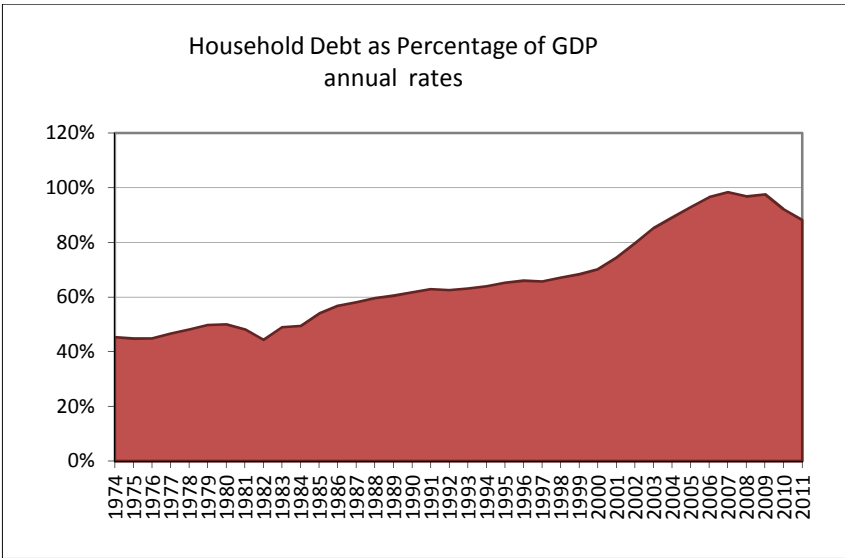
Gross Domestic Product (GDP) is the output of goods and services produced in the United States. Quarterly estimates are expressed as seasonally adjusted annual rates.

SOURCE: Bureau of Economic Analysis, NIPA Tables, Domestic Product and Income, January 2012

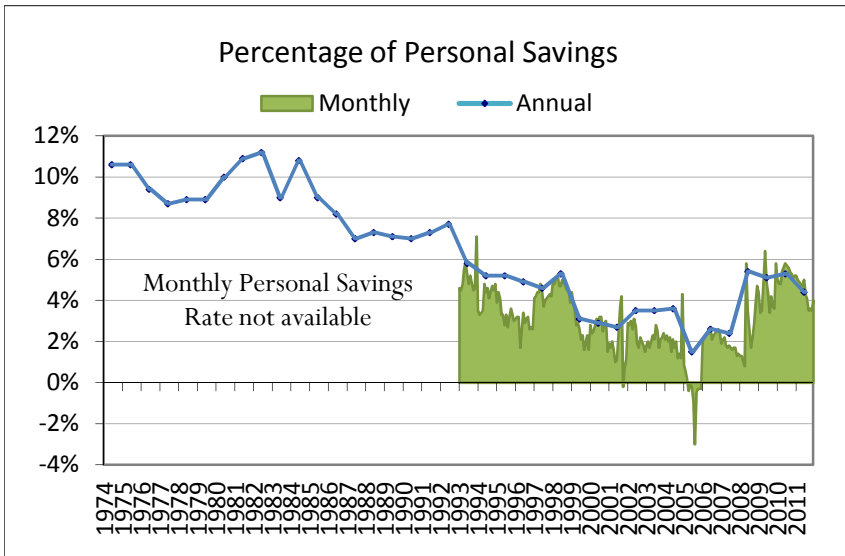
OVERVIEW OF ECONOMIC AND CONSUMER HEALTH



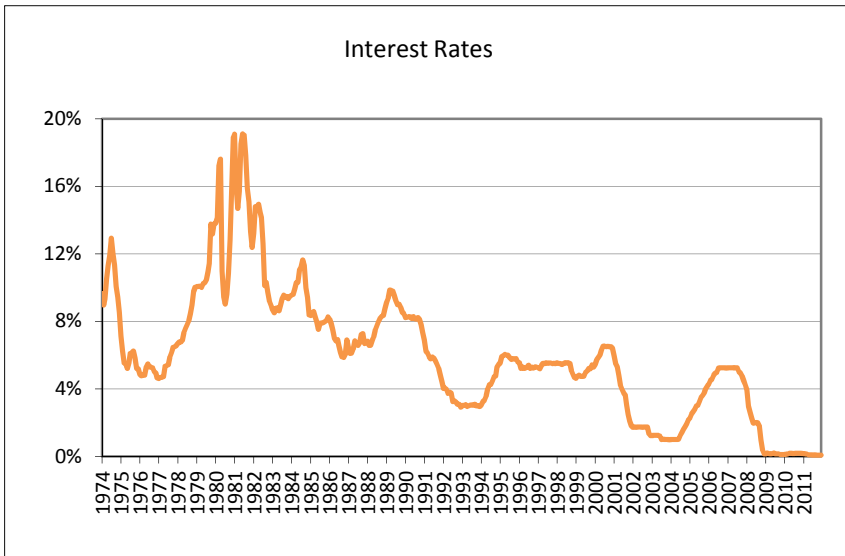
SOURCE: Bureau of Labor Statistics, Current Population Survey, January 6, 2011



SOURCE: Federal Reserve, Flow of Funds Accounts, January 2012



SOURCE: Bureau of Economic Analysis, December 2011



SOURCE: Federal Reserve, Monthly Interest Rates, January 2012

DISCLOSURES & DEFINITIONS

* Statistical data is gathered from Morningstar Advisor and/or the fund manager's web site. All information contained in this document is compiled from sources believed to be reliable and current.

* Indices are not available for direct investment. Their performance does not reflect the expenses associated with the management of a portfolio.

* As with any investment, the holder of each fund is subject to various risk factors. These factors can be explained on a fund by fund basis.

* The performance data shown represents past performance, which is not a guarantee of future results. Current performance may be lower or higher than the data cited.

Disclaimer: *Opinions and views expressed in this report are solely those of the author and are subject to change based on market and other conditions. These materials, including the mention of individual securities and mutual funds, are provided for informational purposes only and should not be used or construed as a recommendation or solicitation to buy or sell any security, fund or sector. Neither Headwater Investment Consulting nor any of its data or content providers (such as Morningstar and Dimensional Fund Advisors) shall be liable for any errors in the content, or for any actions taken in reliance thereon. All data provided by Headwater Investment Consulting is based solely upon research information provided by third parties. Headwater Investment Consulting has not reviewed, and in no way endorses the validity of such data. Headwater Investment Consulting shall not be liable for any actions taken in reliance thereon. Past performance is no guarantee of future results. As with all investment decisions, please complete your own due diligence.*

Large-Cap Stocks - A U.S. large company stock index measured by the S&P 500. It is made up of a group of 500 of the most widely traded stocks in the U.S., as chosen by Standard & Poor's.

Small-Cap Stocks- Measured by the Russell 2000 which is the dominant small-cap index in the U.S. The index is comprised of the smallest 2000 stocks in the Russell 3000 Market Index.

International Stocks- An international stock index measured by the MSCI EAFE. It is comprised of stocks from developed markets in Europe, Australia, Asia, and the Far East.

Emerging Markets - An international stock index that tracks non-developed markets throughout the world. It is measured by the MSCI Emerging Markets Index.

U.S. Bonds - A measure of the Total U.S. Bond Market by the Barclay Capital US Aggregate Bond Index. It takes into account corporate, government, mortgage and asset backed securities.

Foreign Bonds - Measured by the Barclay Capital Global Aggregate Bond Index. The fund is comprised of primarily investment grade bonds from around the world.

Real Estate - Measured by the FTSE NAREIT Index which is a composite of Real Estate Investment Trusts traded on U.S. exchanges.

Commodities - Performance is represented by the Dow Jones UBS Commodity Index.

TIPS - Performance is represented by the Barclay Capital US Treasury Inflation Protected Securities Index. TIPS are government bonds that have adjustable coupon payments based on the rate of inflation (as measured by the CPI).

Treasury Bills - Short-term government issued securities with maturities less than 90 days. Because they are government issued, T-Bills are free from default risk.

HEADWATER INVESTMENT CONSULTING, INC.

2290 SW 2nd Street, Suite A
McMinnville, OR 97128

info@headwater-ic.com
www.headwater-ic.com

TEL: 503-565-2100
FAX: 503-565-2101